

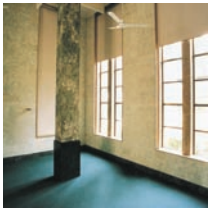


screenopac

# screenopac blackout blinds



When it is necessary to darken a room completely and efficiently, with a system that is reliable and easy to operate, Helioscreen has the answer. Blackout systems are a unique blind system where the fabric fits inside aluminium side channels. The guides are equipped with flexible light excluding double brushes. Total blackout systems can be installed easily in both new and existing buildings and homes, either reveal or face fitted and are available using chain, crank or motorised operation.



The fabrics used in Helioscreen blackout systems are available in a choice of traditional and contemporary colours, to combine perfectly with every interior.



helioscreen®

# specifications

## mechanism

Crank, motorised or chain operation.

## fastening of the fabric

The fabric is fastened to an aluminium roller. The base of the fabric is fixed to an aluminium bottom bar, which serves as a guide and finishing section. The bottom bar weighs 1.4kg per metre, and is fitted with a compressible brush seal.

## finishing - lower edge

The bottom bar closes directly onto a flat surface

## side channels

There are runners at either end of the aluminium bottom bar. The runners slide in two aluminium U shaped channels measuring 70mm x 26mm for motorised or crank operated blinds or 50mm x 26mm for chain operation. Both U channels are fitted with two brushes to ensure complete light exclusion.

## surface treatment of the aluminium section

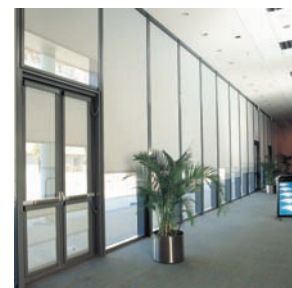
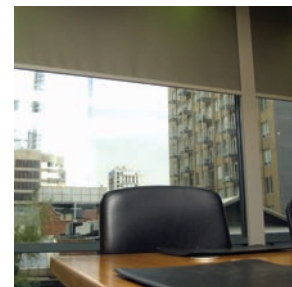
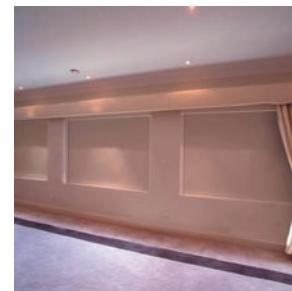
The visible aluminium sections are: anodized, or powder coated. Colour to specification.

## blind boxes

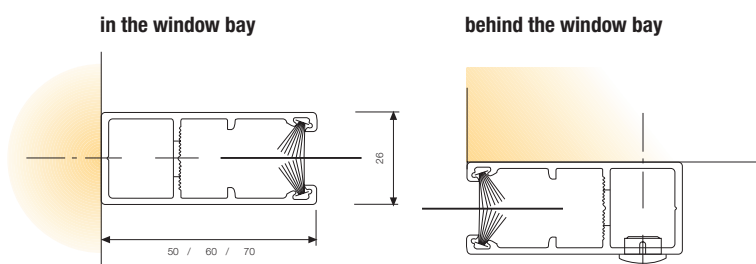
Helioscreen blackout blinds include head boxes made from aluminium sections. These sections are assembled without the use of screws. The boxes are self-supporting. Each box is closed on each end by a side piece to ensure total blackout.

## fabric

Helioscreen blackout fabrics consists of more than 5 textures and 26 colours.



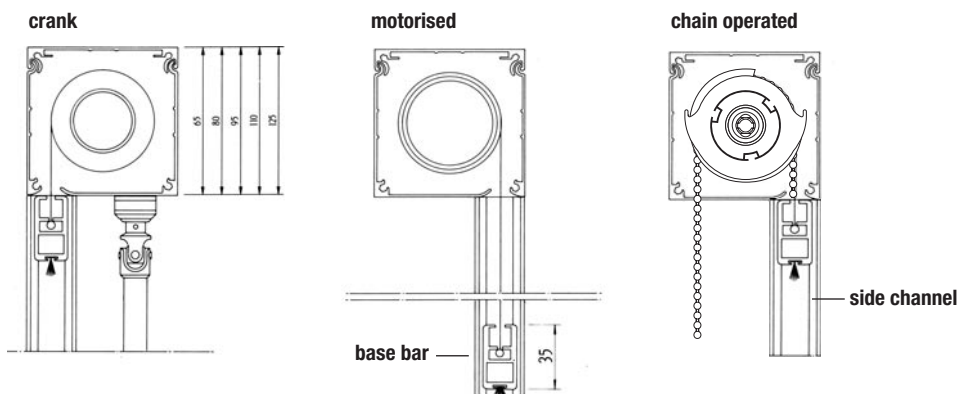
# installing the guide rails



\* motorised and crank operations require 70mm x 26mm side channel

\* chain operation requires 50mm x 26mm side channel

# standard blind boxes



For further technical information please contact Helioscreen direct on 02 9453 0733

Helioscreen® Australia  
 Pty Limited (inc in NSW)  
 ACN 057 797 314  
 Unit 1, 2 Aquatic Drive,  
 Frenchs Forest, 2086  
 Sydney NSW Australia  
 Telephone 02 9453 0733  
 Facsimile 02 9453 0744  
 Email [enquiries@helioscreen.com.au](mailto:enquiries@helioscreen.com.au)  
A registered trademark of Helioscreen® Australia Pty Limited  
 An independent Australian owned company



**helioscreen®**